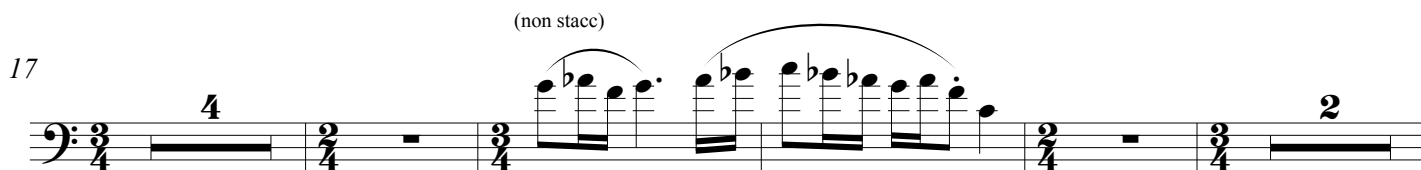
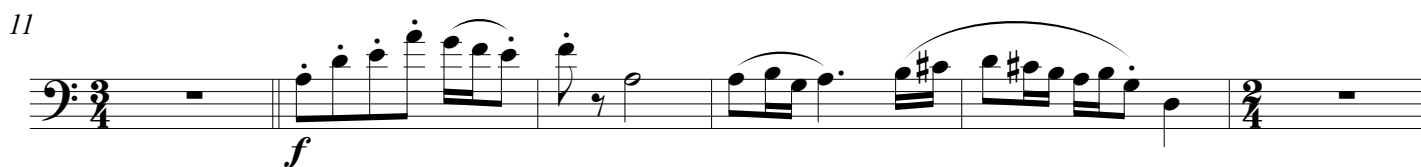


Double Concerto for Bassoon , Harp & Strings

1

Moderato (♩ = 114)

Kjell Marcussen



45

f

49

mp *f*

54

mp *ff*

meno mosso molto espressivo

58

mf

72

mf

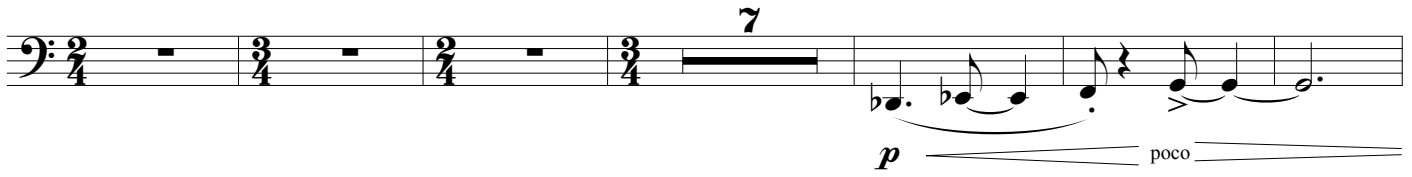
77

mf *sost.* *p* *poco piu mosso* *piu mosso* *mf*

83

mf *a tempo*

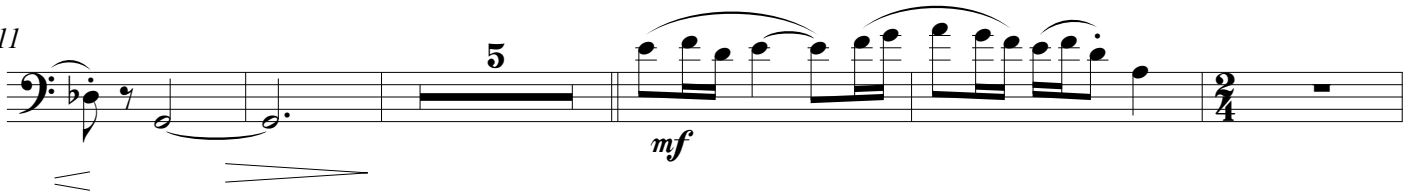
89



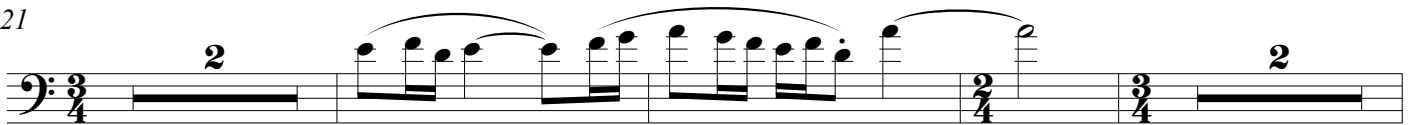
102



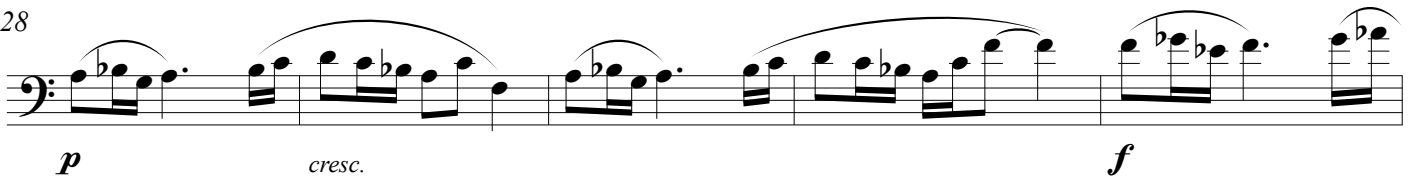
111



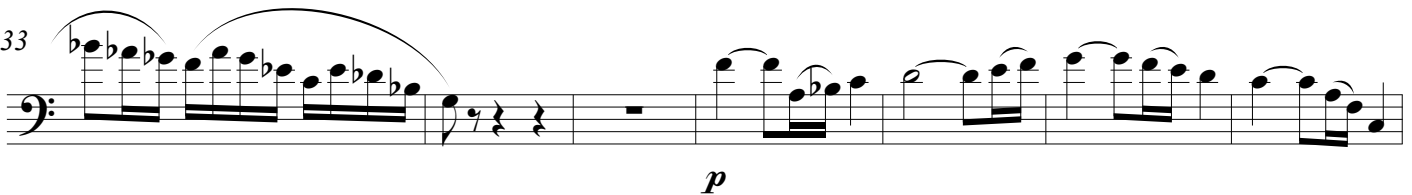
121



128



133



140



[illegible]

2

Largo ♩ = 48

espressivo

3

mf

7

11

3

f

mf

15

poco piu mosso ♩ = 64

8

mf

poco meno mosso ♩ = 62

27

p

30

mf

mp

35

pp

2

3

41

mf

poco accel. Poco piu mosso ♩ = 64

9

54

mf

3

3

3

3

59 *poco accelerando* *Poco piu mosso*
mf

63 *f* *ppp*

74 *p*

80 *p*

82 *accel.* *pp*

87 *molto rubato* *sostenuto* *a tempo*
mf *p*

92 *pp* *mf*

98 *mf*

102 *poco rit.* *p* *pp*

3

Allegro ♩. = 126 (four beats)

2 *mf*

7 *mf*

22 *p* *f*

30 *mf*

34

38 *pp*

51 *f*

55 *mf* *rit.*

61 *poco meno mosso* (two beats)
8
espressivo *mf*

74 *poco piu mosso*
3
p

81
f

87
mp *f*

92 *poco piu mosso* (four beats)
3
f 3

99
10
mf *mf*

115
f

121 *tenuto*
ff 3

130
mf

135

140

pp *ten.* *f*

153

157

p *crescendo poco a poco*

160

163

ff